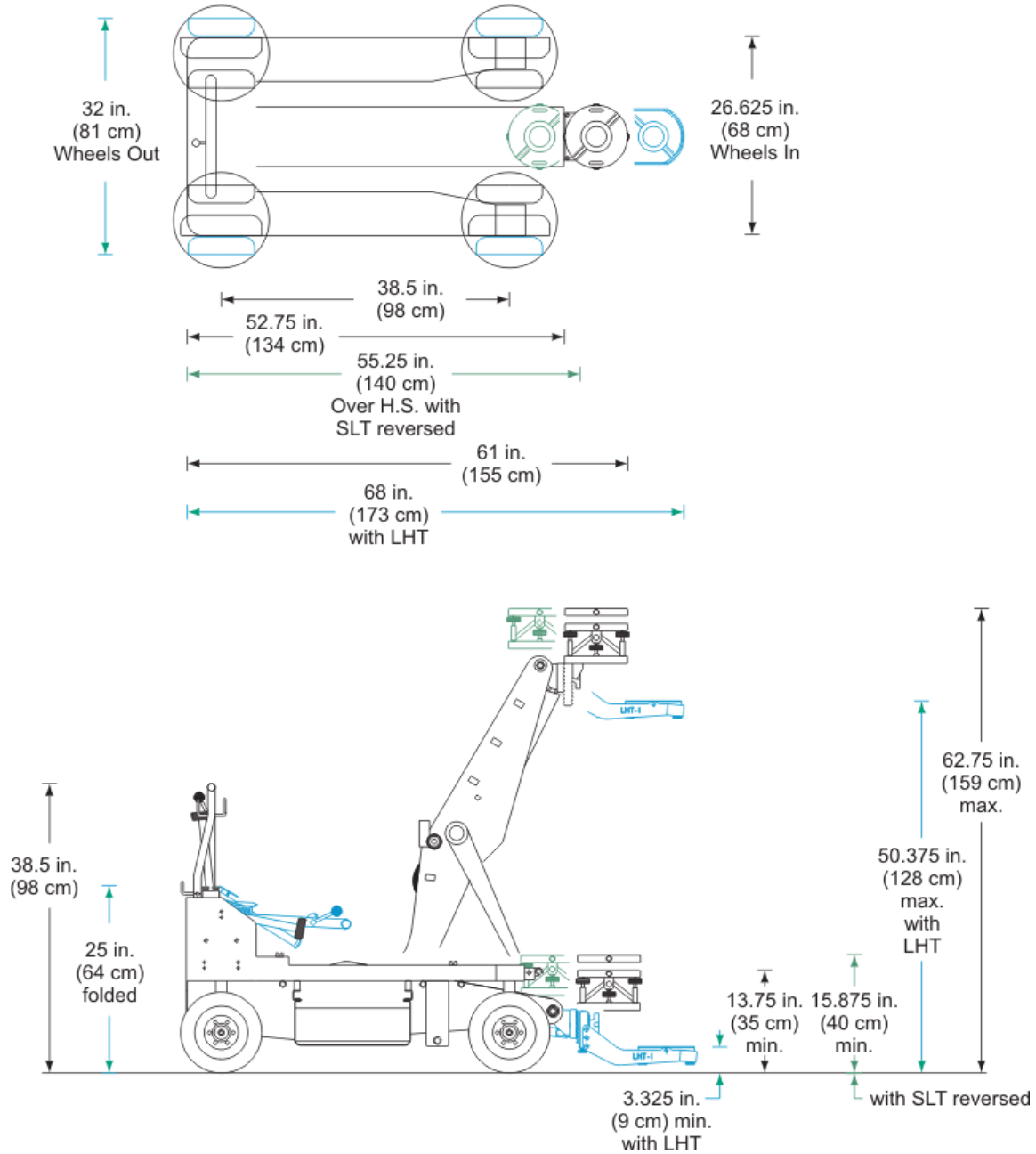


## MODEL 10 CAMERA DOLLY DIMENSIONS



Maximum Lift Beam Elevation .....	63 in. (160 cm)
Minimum Elevation (standard head) .....	16 in. (41 cm)
Minimum Elevation (long low level head) .....	4.75 in. (12 cm)
Vertical Beam Travel .....	47 in. (119 cm)
Lift Beam Capacity .....	500 pounds (227 kg)
Lifts per System Charge .....	7
Length .....	54 in. (137 cm)
Width (wheels in) .....	26.625 in. (68 cm)
Width (wheels out) .....	32 in. (81 cm)
Height (operating) .....	38.5 in. (98 cm)
Height (folded) .....	25 in. (64 cm)
Height (center mount, before riser) .....	38.75 in. (98 cm)
Minimum Turn Radius (round steering) .....	22 in. (56 cm)
Minimum Turn Radius (conventional steering) .....	44 in. (112 cm)
Carrying Weight .....	420 pounds (190 kg)
Maximum Dolly Load Capacity .....	1200 pounds (544 kg)
Crated Size .....	59 in. (150 cm) L x 31 in. (79 cm) W x 34 in. (86 cm) H
Crated Weight .....	928 pounds (421 kg) (standard package)